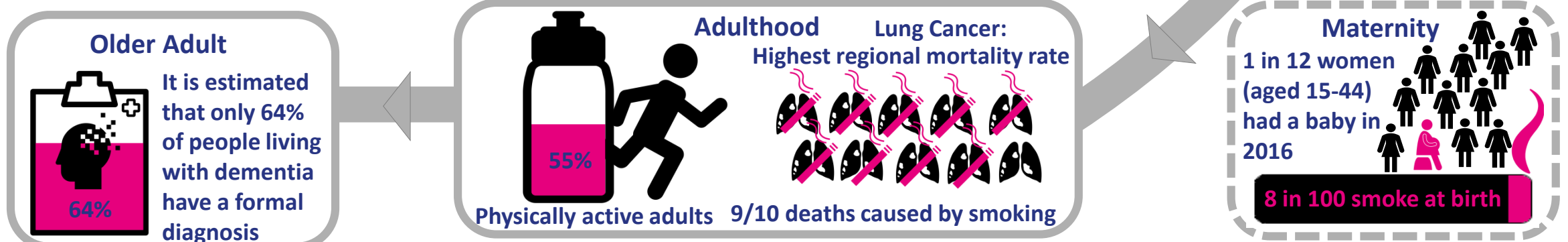
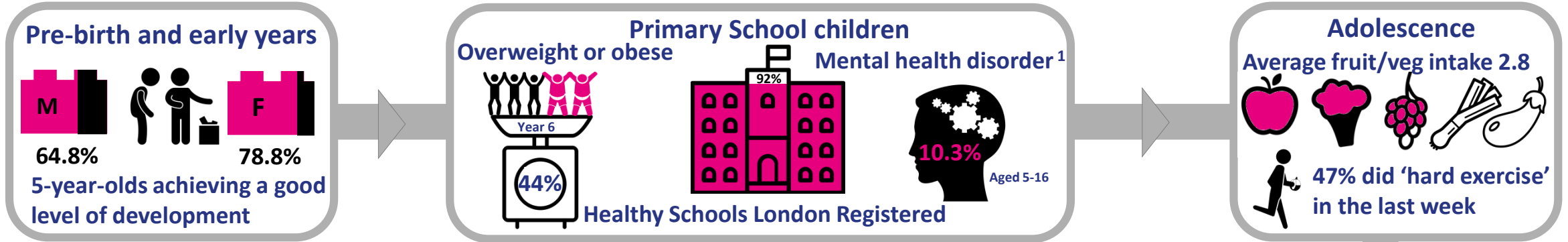
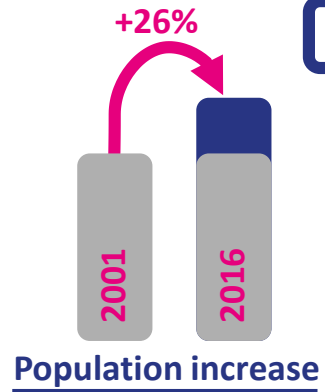


Joint Strategic Needs Assessment 2017: a snapshot

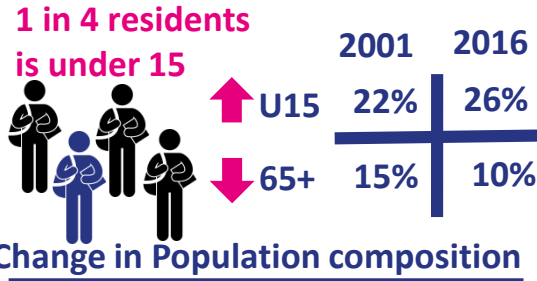


¹Modelled data, those that may have a mental health disorder ²DOT trend based on 5 data points

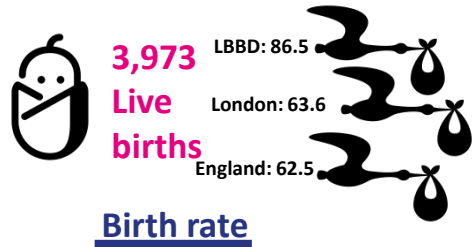
Population change



Population change



The highest birth rate in England and Wales in 2016¹

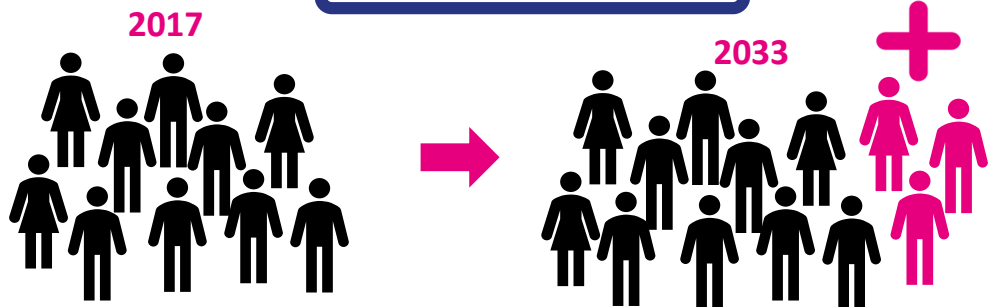


Increase in private renting



Socio-economic changes

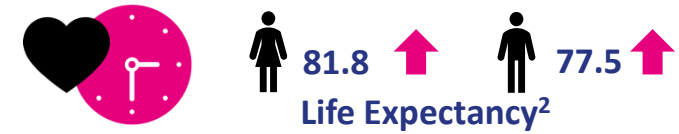
Population predictions



There is a 29% predicted rise in the overall population 2017-2033

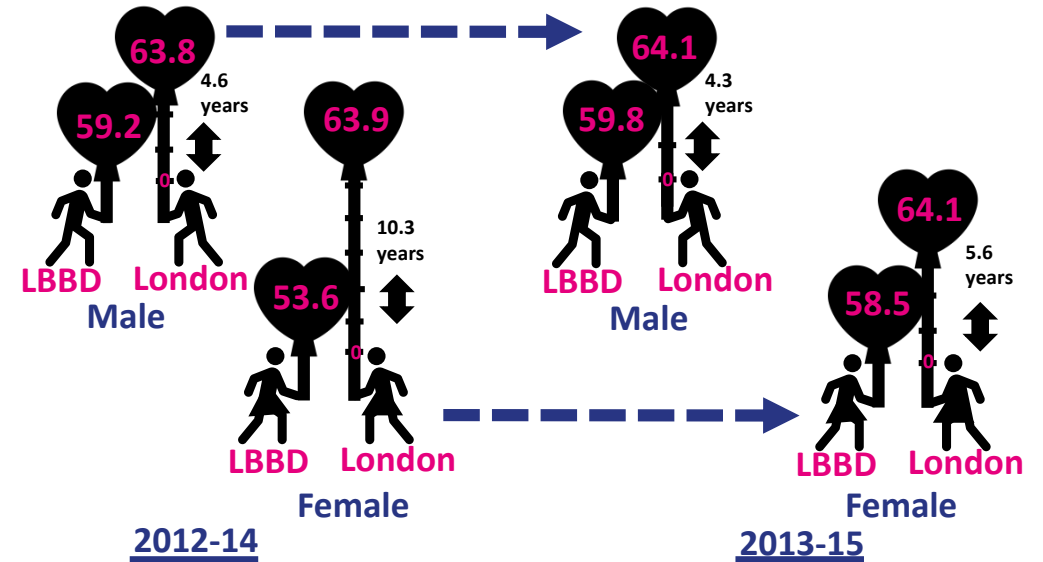
Life expectancy and healthy life expectancy

Life expectancy and healthy life expectancy



Gap in healthy life expectancy

Healthy life expectancy refers to the years lived in good health. LBBD residents live shorter lives in poorer health when compared to London



Improving healthy life expectancy to be above the London average is a target in the 2017/18 Corporate Plan.

¹ Per 1,000 women aged 15-44 ²Trend based on 5 data points

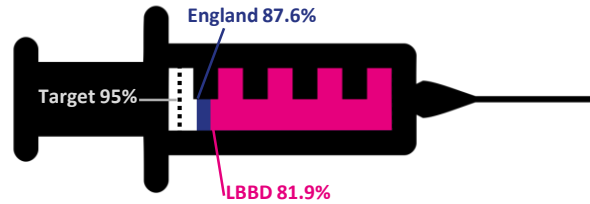
Pre-birth and early years

Level of Development



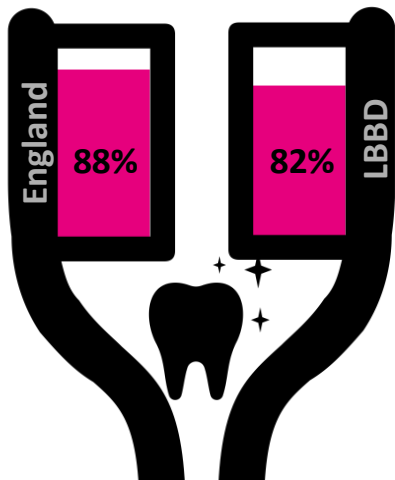
5-year olds achieving a good level of development

Immunisations



5-year olds that have had two doses of measles, mumps and rubella vaccine

Dental health



3-year olds free from dental decay

A&E attendances



A&E attendances Children aged 0-4

Primary School children

Looked after children¹

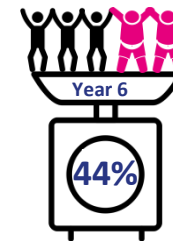
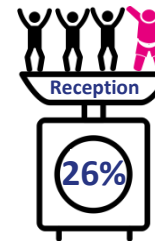


66.2 per 10,000 under 18 year olds are Looked after children

94% of LAC received a health check



Healthy weight



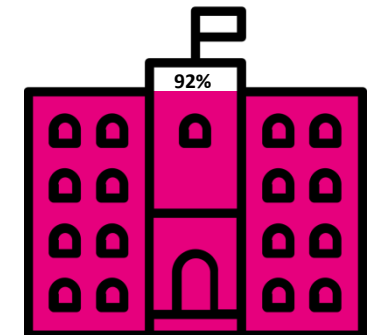
Percentage of children that are overweight or obese 2016/17

Mental Health²



10.3%

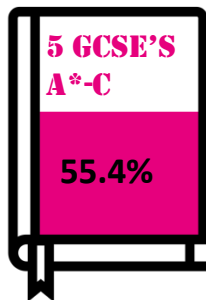
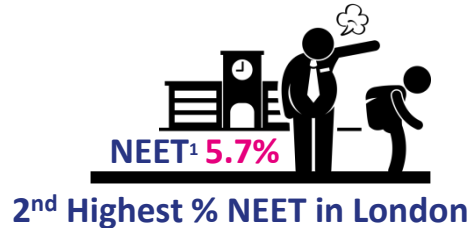
Children aged 5-16 that may have a mental disorder**



Healthy Schools London Registered

Adolescence

Training educational & socio economic outcomes



Healthy eating & Physical activity

Average fruit/veg intake 2.8



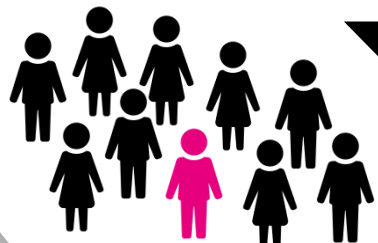
47% of school survey respondents did 'hard exercise' in the last week

Sexual and reproductive health

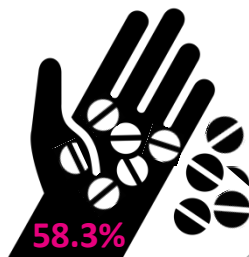
1 in 10 Year 10 students reported being sexually active.

In the last 10 years the U18 conception rate has more than halved from 65.9 to:

In 2015 over half of U18 conceptions ended in abortion².



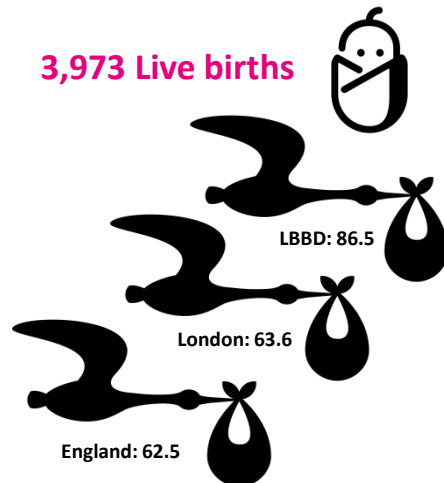
½ reported "always" using contraception



Maternity

Birth rate³

3,973 Live births



The highest birth rate in England and Wales in 2016

Breastfeeding

We do not know the breastfeeding status of 2 in 5 infants



For those with a known status: 65.5% were partially or totally breastfed



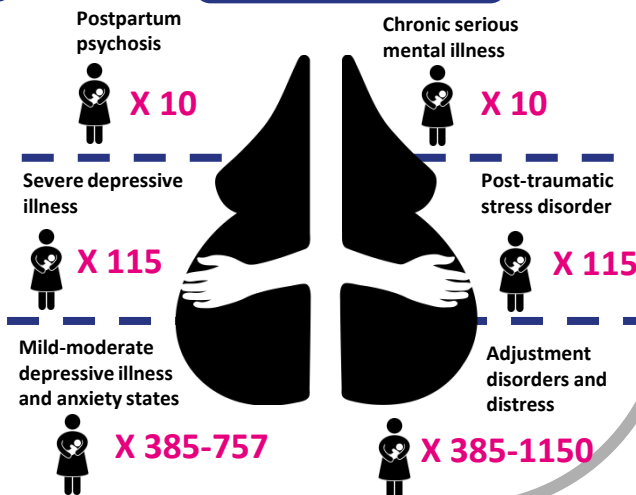
Smoking at time of delivery



8 in 100 smoke at birth

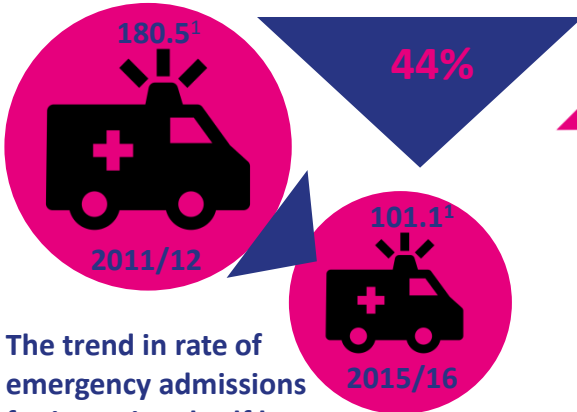
In 2016, 1 in 12 women (aged 15-44) had a baby in LBB

Mental health⁴



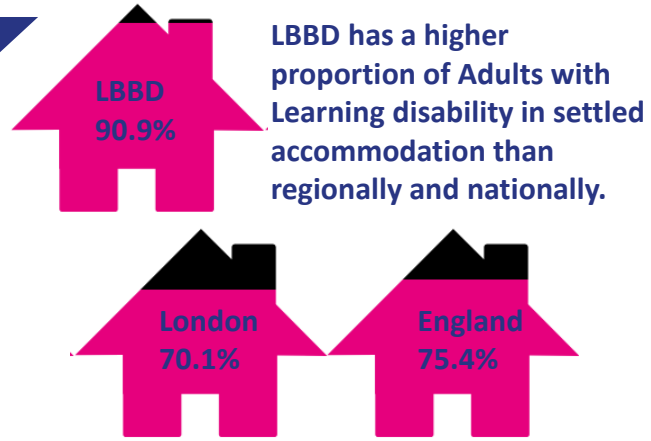
Adulthood

Mental health



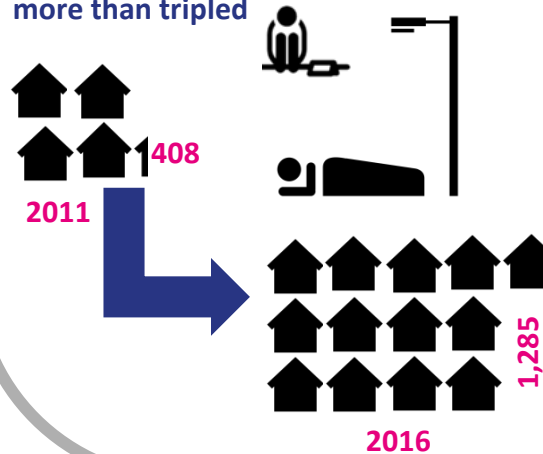
The trend in rate of emergency admissions for intentional self harm

Learning disabilities and autism



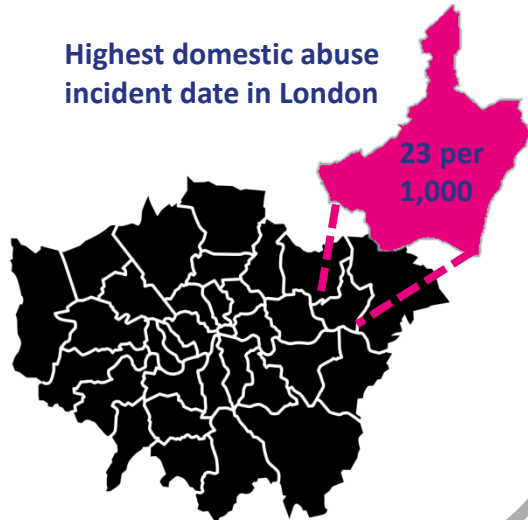
Homelessness

The number of households making a formal homeless application have more than tripled



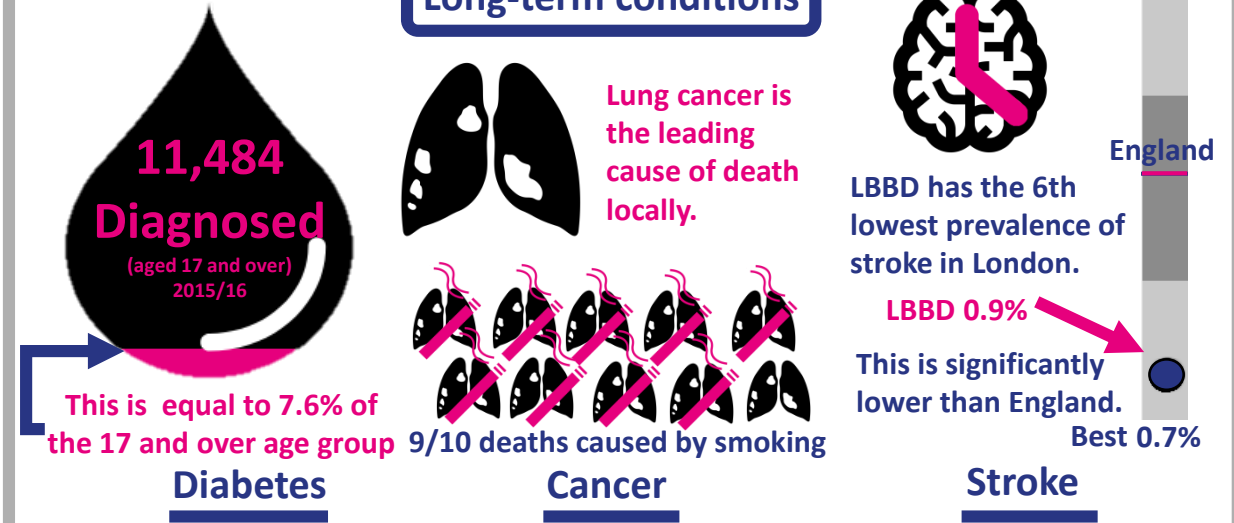
Domestic violence

Highest domestic abuse incident rate in London

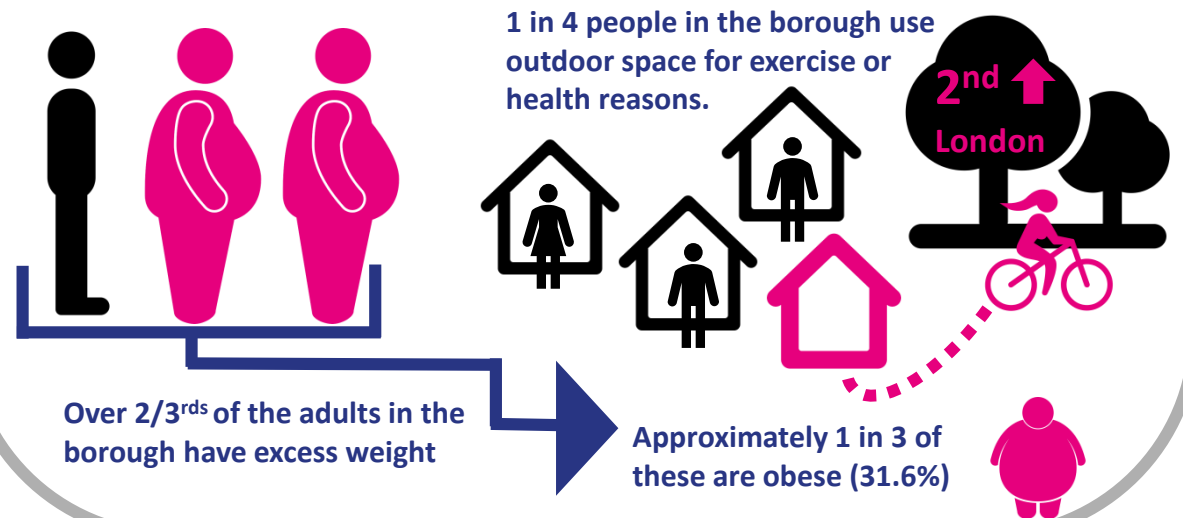


Adulthood

Long-term conditions



Lifestyle behaviours



¹ Rate per 100,000

Older Adults

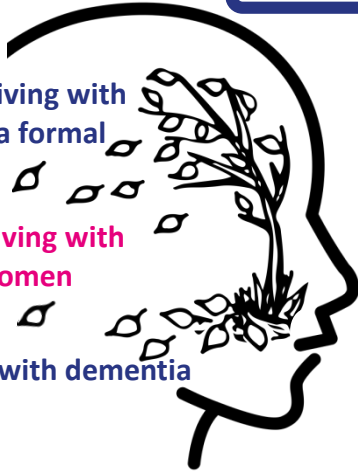
Mental health

64% of people living with dementia have a formal diagnosis

65% of people living with dementia are women

37% of people with dementia die in hospital

In 2016, the recorded prevalence of dementia (aged 65+) was 4.32%



In 2017, 1 in 4 people aged 65-74 live alone¹



Half of all over 75s live alone



1 in 3 carers aged 65+ reported social isolation

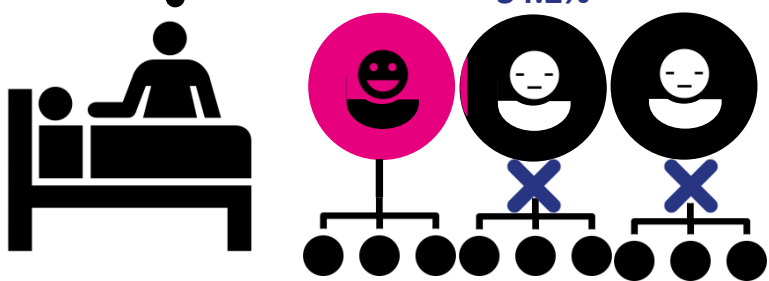
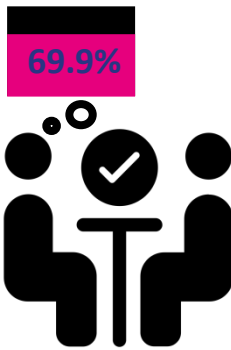
Dementia

Carers

Carer satisfaction with quality of life



Carers that felt included or consulted about the person they care for:



34.2% of carers have as much social contact as they would like

Loneliness & social isolation

Older Adults

Health and care system

+ 300

Additional support requests for social care between 2015/16 and 2016/17²

60%



60% of these additional support requests were for those aged 65+.

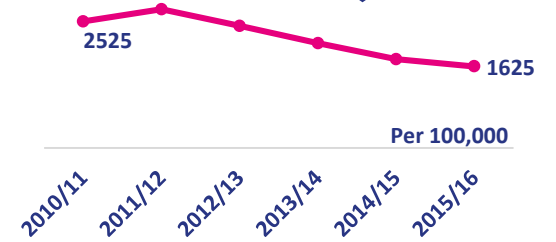
Falls



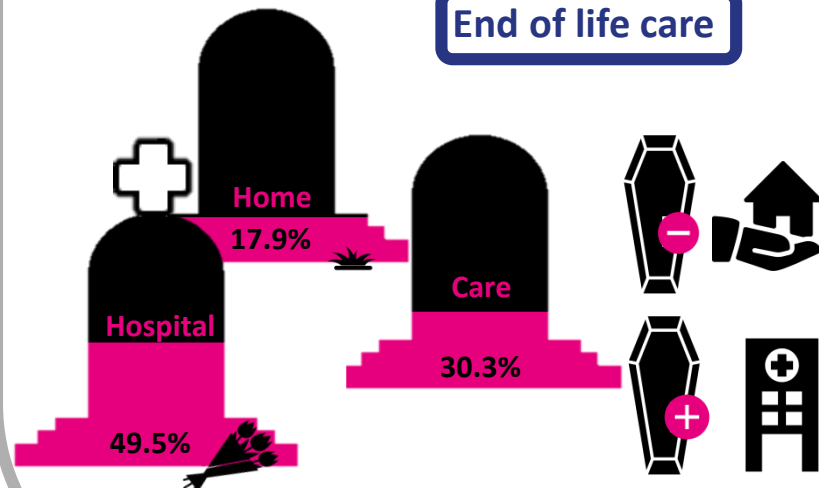
Significant reductions in emergency hospital admissions resulting from falls (aged 65 and over) in the last 5 years



-1,141 per 100,000³



End of life care



Almost half of adults aged 85+ die in hospital

Significantly fewer adults aged 85 and over die in care homes

Significantly more adults aged 85 and over die in hospital

Local vs national picture

¹projections from the Projecting Older People Population Information System 2017. ² Requests for social care support can be used as a proxy indicator of social care demand, although it should be noted that this has limitations. ³ 2011/12-2015/16, recent data suggests a reverse in trend.